

## TP 10 TRIPOD TURNSTILE



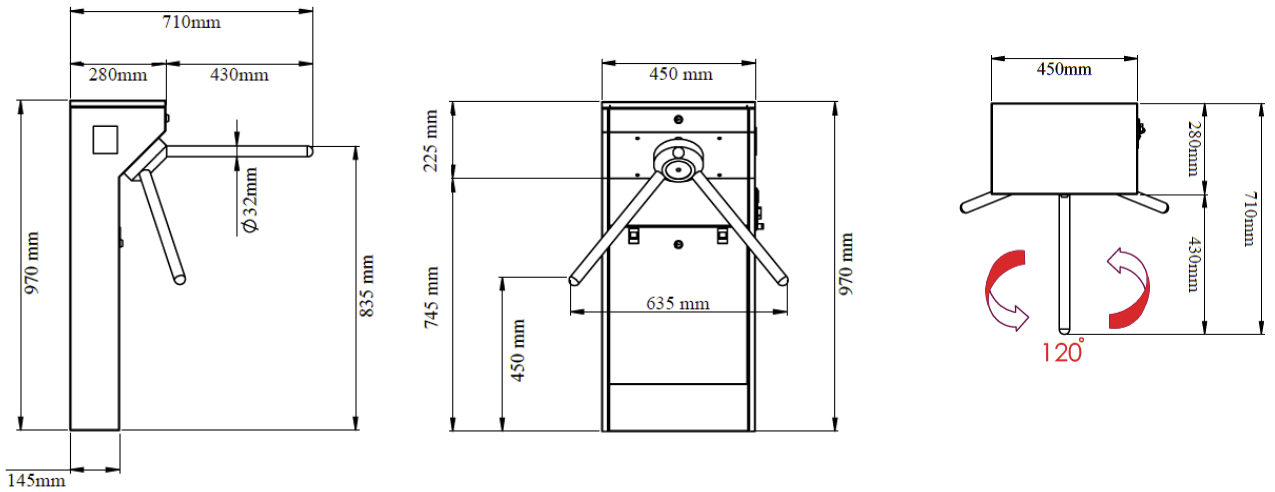
### GENERAL INFORMATION

Single leg tripod turnstiles are widely used at places such as railways, subway stations, business and sports centers, government or private offices, etc. which require efficient pedestrian access control. By their three rotating arm systems, tripod turnstiles allow only one person to pass on each turn. They provide a moderate level of security while combining high durability and aesthetic design.

### MAIN CHARACTERISTICS

- Elegant design with 304 grade stainless steel,
- Heavy-duty mechanism that controlled by reliable electronics, easy to maintain, long product life,
- Robust design to handle high-frequency usage that manufactured from 1.5 mm thick stainless steel, allowing bidirectional passage,
- Optional drop arm feature is an ideal solution for fast pedestrian access in an emergency situation,
- Can be integrated with various access control systems with their electronics.

### TECHNICAL SPECIFICATION



#### PHYSICAL CHARACTERISTICS

<b>MAIN BODY</b>	1,5 mm 304 grade stainless satin finish steel, Flat top and angled top options are available
<b>ROTATING ARMS</b>	1,2 mm 304 grade stainless polished steel, 430 mm arm length, drop arm option is available
<b>DIMENSIONS</b>	280mmx 450mm x 970 mm, (W x L x H)
<b>TREATMENT</b>	Anti-corrosion coating

#### OPERATIONAL CHARACTERISTICS

<b>OPERATION FREQUENCY</b>	More than 30 passengers per minute
<b>CONTROL UNIT</b>	Microprocessor based control, ease of integration with all kinds of access equipment
<b>DROP ARM FEATURE</b>	Provides easy and fast accessing in case of emergency, ease of evacuation
<b>DIRECTIONAL MODE</b>	Only entrance, only exit, entrance and exit operations
<b>ROTATION CONTROL</b>	Self-centering, smooth operation by spring and hydraulic damper system
<b>POSITION DETECTION</b>	Two separate micro-switches at mechanism
<b>ELECTRICAL FAILURES</b>	Main mechanism released automatically to rotate the arms free
<b>OPERATING VOLTAGE</b>	115-240 VAC / 24 V DC, 50-60 Hz
<b>NOMINAL MAX. CURRENT</b>	250 mA / 850 mA
<b>POWER CONSUMPTION</b>	30 W
<b>PASSAGE COUNTER</b>	Passage counter available to integrate to control unit
<b>CONTROL UNIT</b>	Entry, Exit, Emergency operations, Passage sensors, Token/Coin unit inputs, Coin feedback signals, Speaker output
<b>SAFETY</b>	Electrical and mechanical safety, Ergonomic design of rounded sides and corners to avoid injuries
<b>INDICATORS</b>	Two warning indicators on both directions

#### RESISTANCE CHARACTERISTICS

<b>ENVIRONMENTAL CONDITIONS</b>	-25 °C / +70 °C
---------------------------------	-----------------

#### OPTIONAL ACCESSORIES

<b>PASSAGE SENSOR</b>	Sensors can be integrated in accordance with required functions like real time passage signal or Unauthorized passage alarm
<b>STAND-ALONE CARD READER</b>	For sites without access control systems, different types of stand-alone card readers are available
<b>BUTTON CONTROL UNIT</b>	Designed for guard rooms to provide easy operation for security personnel
<b>TOKEN UNIT</b>	All token and coin collectors can be integrated to turnstiles

#### CERTIFICATIONS AND WARRANTY

<b>CERTIFICATIONS</b>	ISO 9001:2015, ISO 14001:2015, OHSAS 18001, CE, TSE
<b>WARRANTY</b>	2 years