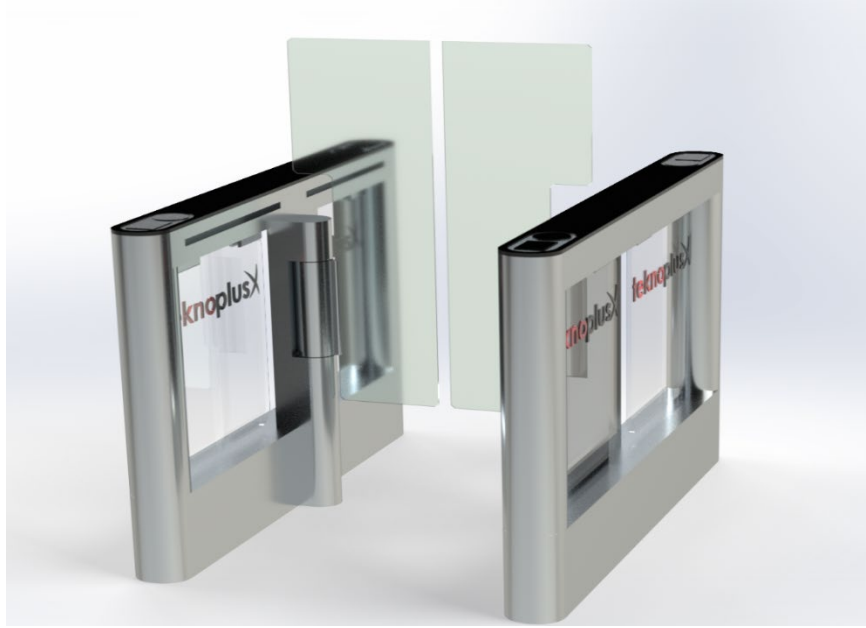


TP SG-400 SPEED GATE TURNSTILE



GENERAL INFORMATION

TP-SG-400 Series are durable products that can be used indoors. Provides access control in areas requiring moderate security. With its compact design, it provides the perfect solution for assembly areas where aesthetics and elegance are important.

Barrier arm movement is provided by the 400W motor with PLC control. Eight optical sensors in the turnstile provide control of access control scenarios. Speed Gate Turnstiles are suitable for intensive use. It is the perfect solution when architectural design, aesthetics and transition speed are important.

Design

- The main body of the turnstile is made of 304 stainless steel and the wings are made of 10 mm tempered glass material.
- Stain case design with a smoothed corner.
- All other parts in turnstile are electro-galvanized against corrosion.

Safety

- Obstacle movement of the wings is provided by PLC controlled "400W Motor".
- Heavy duty mechanics, controlled by reliable electronics ensure a long product life with minimum maintenance requirement.

Integration

- Easy integration with all access control equipment through functional electronic control board (RFID Device, Button Control, Finger Print, and Biometric Device)

MAIN CHARACTERISTICS

TP SG - 400 - S



Single Wing

Turnstile main body is 304 stainless steel wings are tempered glass.

The top cover is made of black glass with 10mm tamper.

Configured as:

- * Master / Starting Unit or
- * Slave / Ending Unit

Provides one 550 mm wide

TP SG - 400 - D



Double Wing

Turnstile main body is 304 stainless steel, wings are tempered glass.

The top cover is made of black glass with 10mm tamper.

Configured as:

- * Master / Center Unit and
- * Slave / Center Unit

Provides two 550 mm wide passages at each side.

TP SG - 400 - X



Disabled Single Wing

Turnstile main body is 304 stainless steel.

The top cover is made of black glass with 10mm tamper.

Configured as:

- * Master / Starting Unit or
- * Slave / Ending Unit Provides one 900 mm wide passage.

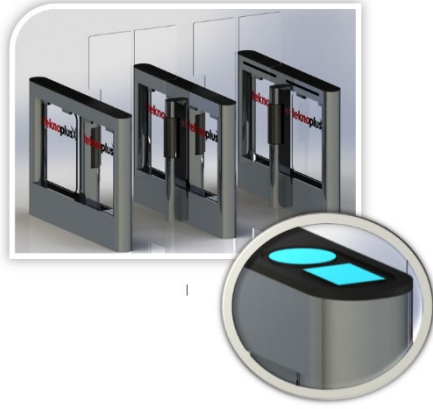
INSTALLATION PLATFORM



- Ease of modular installation with anti-skid bottom platform.
- Front and rear ramp system for easy access.
- Ease of transportation with forklift unit.

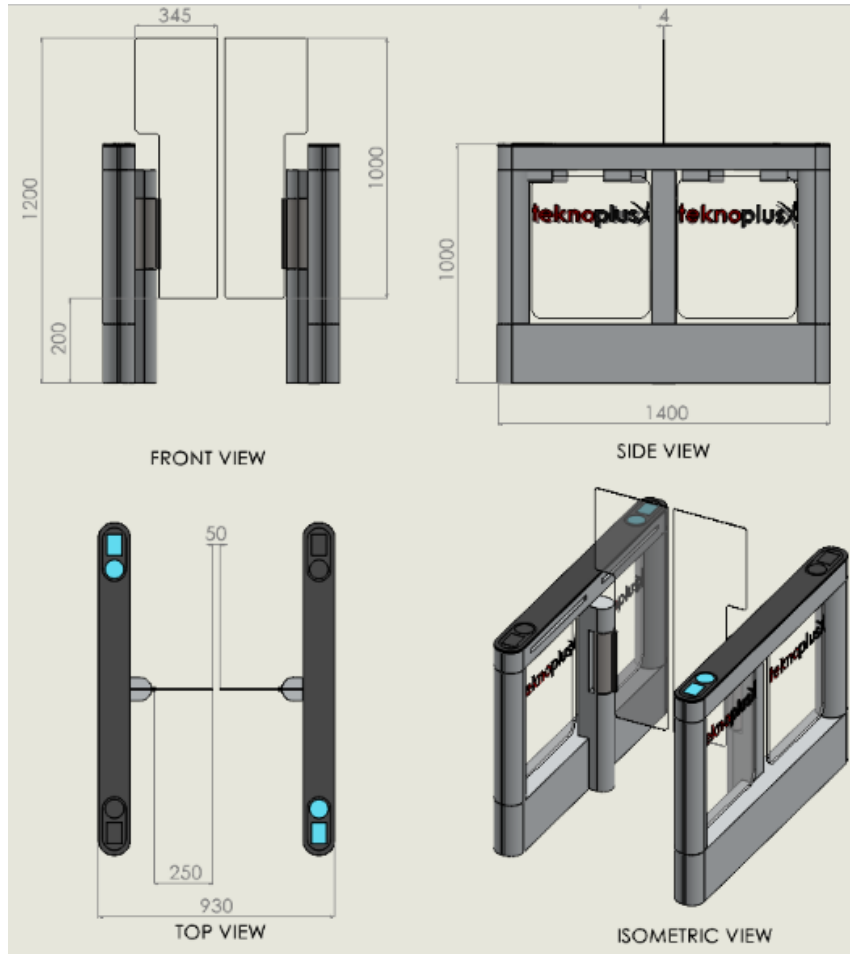


- BT-1 and BT-2 type options, usually use in security booths or security rooms, for remote control of "In-Out-Emergency" modes.



- Card Pass Readers
- Finger Print
- Barcode Reader

TECHNICAL DRAWING



PHYSICAL CHARACTERISTICS

MATERIAL	AISI- 304 - Stainless Steel - Scotch Brite
TOP COVER	10 mm tempered glass (Upper surface of plexiglass)
INNER CASE	Reinforced with 6 mm horizontal galvanized metal bars to increase strength.
WINGS	10 mm tempered glass (Opt. Logo Printing)
STANDARD DIMENSIONS	190mm x 1400mm x 1000mm (Single Wing) – 260mmx 1400mm x 1000 mm (Double Wing)
STANDARD PASSAGEWAY WIDTH	550 mm (Passage Area : 250 mm + 50 mm + 250 mm)
WING HEIGHT	120 cm to 150 cm

ELECTRICAL PARAMETERS

OPERATION VOLTAGE	110 - 240V AC 50/60 Hz (+/- %10)
MAX CURRENT / POWER CONSUMPTION	5A / 250W
MEAN CYCLES BETWEEN FAILURE (MCBF)	15 M Cycles

FUNCTION WORKING

CONTROL UNIT	All inputs are opto-coupler protected. Controlled by dry contact or grounding input. Compatible with all access control systems that provide dry contact or grounding outputs
OUTPUT DATA (FEEDBACK)	The systems provides dry contact, NO - Normally Open, entry - exit passage feedback by relays Movement Mechanism 400W Motor
SENSOR CONTROL	8 point (pairs) IR sensor control for N/O mode, sequential (switching) passage feature for N/C mode. The system continuously monitors the status of the corridor and gives alarm in several cases
ELECTRONIC CONTROL UNIT / COMMUNICATION	PLC control unit
GATE OPEN - CLOSE RATE / TIME OUT DELAY	0,5 - 1, 5 second / Adjustable ; Operating Modes
FLOW RATE	30 Person - Passage / Minutes / Normally Standard* (*The use of different access control units may result in a change in the transition speed.)
WORKING ENVIRONMENT - IP RATING	Indoor - IP 44
OPERATING TEMPERATURE / HUMIDITY	-20° C / + 68° C - +68° C 0 / + 45° C (RH 95% not-condensing)
OCCUPANCY MONITORING	When a user occupies the lane without flushing a card, systems gives alarm after an adjustable time.
ANTI - TAIL – GATING	When an unauthorized access attempt is made right after a valid access, system will give alarm and block access right after the valid passage (alarm/block access configurations are adjustable)
POSITION DETECTION	Position of the obstacle wings are continuously detected by motor and encoder
LED INDICATOR	Passage Free - Green / Passage Closed - Red
PASSAGE DIRECTION	Bi-Directional operation feature. Entrance-Exit
WING MOVEMENT	Swing Wing Movement